



## DIRECTIONS

A flat water paddle with no portage between the Lower and Upper Kalgan bridges, suitable for all types of paddle craft and paddlers of all abilities.

The river provides a range of experiences from the wide open lower reaches to the narrow upper reaches through tall shady trees.

As well as the recommended launching facility on the west side of the river at Lower Kalgan Bridge there are many suitable launching sites from the 2WD accessible road along the east bank on the southern half of the route.

The paddle provides the opportunity to see the abundant wildlife that inhabits the river environment including pelicans, ducks and osprey.

To travel to the start point from the Town Square (15km) drive up York Street and straight through the top roundabout onto Lockyer Avenue. Continue north along Lockyer Avenue through the roundabout to Ulster Rd, which becomes Lower King Road and then Nanarup Road. Cross the King River and continue on a further 3km to the Kalgan River. Just before the bridge turn into the car park on the left (north) side of the road. Launch next to the bridge.

<b>Grade:</b>	S01
<b>Distance:</b>	10 kms one way
<b>Time:</b>	2 to 2.5 hours
<b>Recommended Launch Point:</b>	West side of the river at Lower Kalgan Bridge
<b>Alternative Launch Points:</b>	Beginning of Luke Pen Walk on East Bank Road

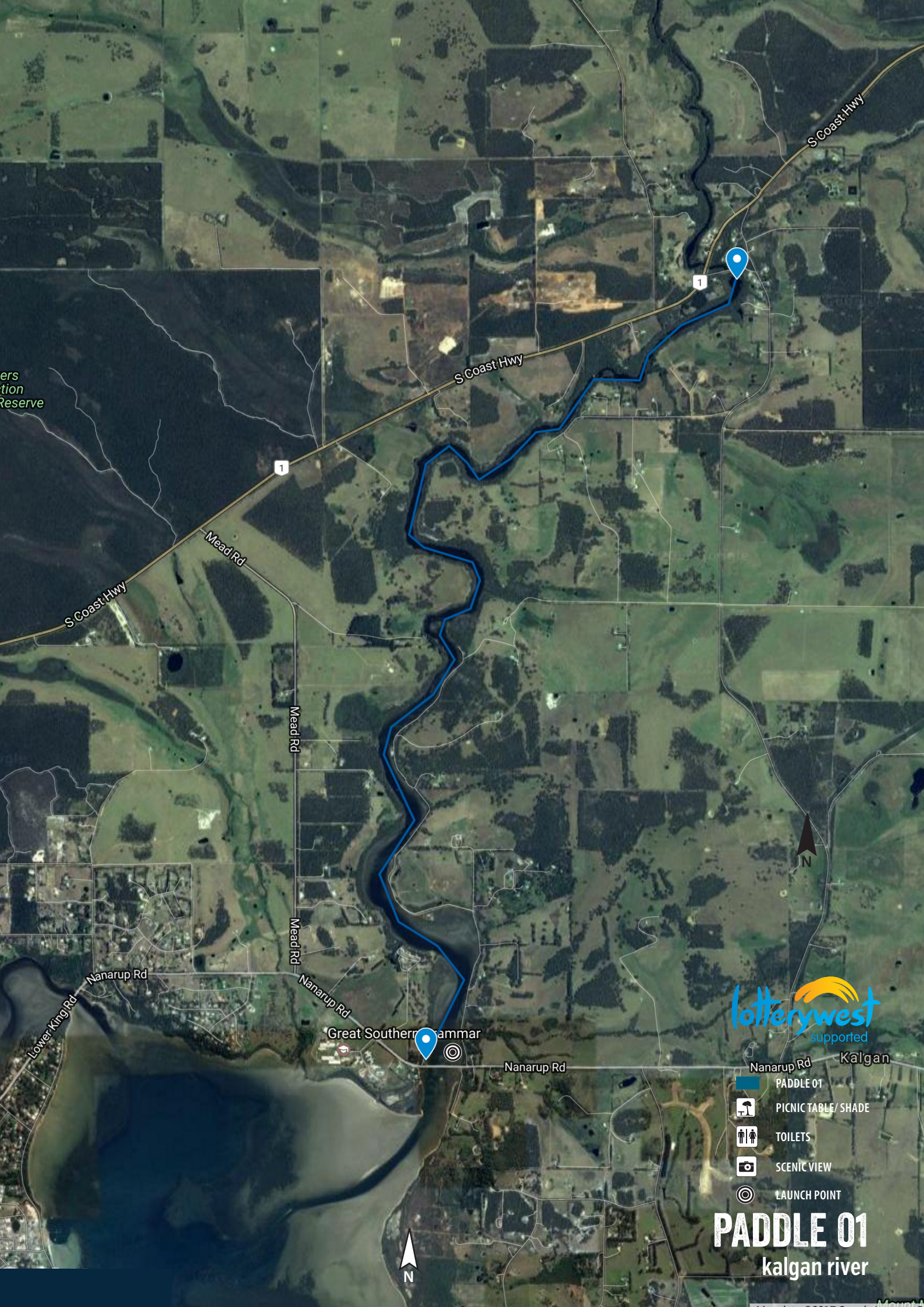
## DESCRIPTION

To launch you can drive to the water's edge on the west side of the river.

1. Paddle north and upstream from the bridge in the wide open river.
2. As you round the first bend in the river you will pass the Kalgan River Chalets and Caravan Park on the west side of the river. When the tide is low follow the channel markers to find deeper water.
3. As you paddle upstream the river becomes narrower and less affected by the wind. The river has a moderate level of motor boat traffic, so where possible stay close to the edge where there is also more chance of observing the local wildlife.
4. Approximately 3km upstream you pass the Water Ski Club and facilities. Although it is possible to land here, it is not recommended.
5. After approximately 4.5km you pass the car park for the beginning of the Luke Pen Walk and Elbow Island. Take the time to circumnavigate the island.
6. As you head further north there are farms on both sides of the river but still good vegetation on the river banks. Spot the Montgomery Hill Vineyard on the west bank.
7. The river continues to narrow from this point and has less motor boat traffic but still plenty of water for paddle craft all year round.
8. Continuing upstream you will pass a number of small islands before arriving at the bridge at Wheeldon Road. It is possible to carry your craft over the rocks and continue upstream for several more kilometers, however most paddlers choose to turn back at this point or carry their craft up the steps if only paddling one way.



**SAFETY FIRST!**



ers  
tion  
Reserve

S Coast Hwy

S Coast Hwy

S Coast Hwy

Mead Rd

Mead Rd

Mead Rd

Nanarup Rd

Nanarup Rd




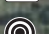
Great Southern Hammar

Nanarup Rd

Nanarup Rd

Kalgan



-  PADDLE 01
-  PICNIC TABLE/ SHADE
-  TOILETS
-  SCENIC VIEW
-  LAUNCH POINT

# PADDLE 01

kalgan river

