

Boating Guide Mandurah Marine Safety



**YOU'RE THE SKIPPER
YOU'RE RESPONSIBLE**

August 2023 - R1

SAFETY EQUIPMENT REQUIREMENTS

	REGISTRABLE VESSELS Including sailing vessels that are or can be propelled by mechanical power	
	PROTECTED WATERS Includes rivers, lakes, estuaries, harbours and waters within 400 metres from the shore but excludes Cambridge Gulf and Lake Argyle.	UNPROTECTED WATERS Beyond 400 metres from the shore.
Recreational Skipper's Ticket The skipper of a recreational vessel, powered by a motor greater than 6 horsepower must hold an RST.	✓	✓
Lifejacket Carriage A lifejacket, as indicated in the table opposite, must be carried for every person on board.	Vessels smaller than 4.8m ✓ Minimum Level 100 MUST BE CARRIED	✓ Minimum Level 100 MUST BE WORN
	Vessels 4.8m and larger ✓ Minimum Level 100 MUST BE CARRIED	✓ Minimum Level 100 MUST BE CARRIED
Lifejacket Wearing As indicated in the table opposite.	Children older than one and younger than 12 ✓ Minimum Level 100 MUST BE CARRIED	✓ Minimum Level 100 MUST BE WORN
	Personal Water Craft ✓ Minimum Level 50S MUST BE WORN	✓ Minimum Level 50S MUST BE WORN
Distress Beacon (in-date) A GPS enabled 406 MHz EPIRB OR If worn by at least one person, a GPS enabled PLB. Distress beacons must be in-date and registered with AMSA.	RECOMMENDED	✓
	Red and Orange Flares (in-date) At least two hand held red flares and two hand held orange flares must be carried. OR Electronic Visual Distress Signal An electronic signalling device may be carried in lieu of flares. IE a GPS enabled EPIRB or PLB (must be worn) is also carried.	RECOMMENDED
Marine Radio A HF or VHF marine radio on any Registrable Vessel when operating more than 4 nautical miles from shore in unprotected waters.	RECOMMENDED	REQUIRED beyond 4 nautical miles RECOMMENDED within 4 nautical miles
	Recommended Additional Safety Equipment It is recommended an anchor and line, a fire extinguisher and a means of removing water be carried.	RECOMMENDED

Contact details
Department of Transport
Email: Ed.Boat@transport.wa.gov.au
Website: www.transport.wa.gov.au/imarine
Marine Safety Hotline: 13 11 56

Police
Emergency: 000
Water Police: 9442 8600
Mandurah: 9581 0222

Department of Fire and Emergency Services
Marine Rescue Western Australia
Emergency contact: VHF 16
Marine Rescue Mandurah

Boating Weather Forecasts
Boating weather: 1300 815 916
Website: www.bom.gov.au

Department of Primary Industry and Regional Development
Fishwatch: 1800 815 507
Website: www.dpir.wa.gov.au

Department of Biodiversity, Conservation and Attractions
Website: www.dbca.wa.gov.au

DECKEE Boating in WA just got smarter. Download the free Deckee app.

DoT Direct anywhere, anytime! Save time and go online today.

Join us at facebook.com/MarineSafetyWA

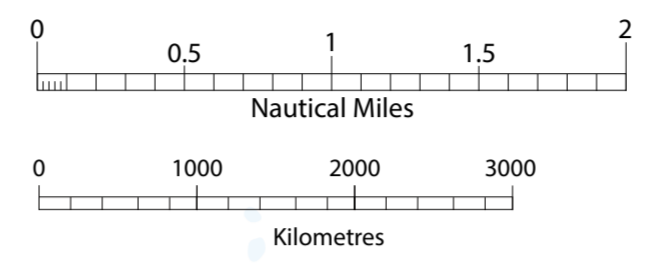
For further information go to www.transport.wa.gov.au/boatingguides or scan the QR Code

The information contained in this publication is provided in good faith and believed to be accurate at time of publication. The State shall in no way be liable for any loss sustained or incurred by anyone relying on the information. 16-18-02-SER-0523-WEB-S1

COMET BAY

NOT TO BE USED FOR NAVIGATION

For more detailed information, refer to Department of Transport Nautical Charts
Cape Peron to Dawesville WA 913
Wambo DMH 227
Peel Inlet and Harvey Estuary WA 848



- Legend**
- 5 Knot speed limit
 - 8 Knot speed limit
 - Mooring area
 - 12 Knot speed limit
 - Closed waters - All Vessels
 - Closed waters - Motorised Vessels
 - Water ski area
 - Swimming prohibited
 - Private moorings / Public courtesy moorings
 - Beach / ramp boat launching
 - Public toilet / gps validation marker
 - Fuel outlet / non-powered launching
 - Coast camera
 - Wreck / breakers

WARNING
During moderate swell, seas may break over depths of about 6 metres.

Water skiing
Water skiing involves being towed over water at a speed of 8 knots or more by a motor boat.
It takes at least three people to go water skiing:

- A driver of at least 17 years of age with a Recreational Skipper's Ticket.
- An observer of at least 14 years of age.
- A person being towed.

Vessels taking off with skiers always give way to vessels landing a skier. Beach take-off and landings are only permitted in the designated take-off and landing areas.

Skating is only permitted between the hours of sunrise to sunset, unless otherwise indicated. For further information visit our website or call 13 11 56.

Personal water craft (PWC)
Every skipper of a PWC must hold an RST. A skipper who is older than 14 but under 16 years of age with an RST can only operate a PWC during daylight hours at a maximum speed of 8 knots.

- Every person on board a PWC must wear a lifejacket (minimum 50S) at all times.
- When travelling beyond 400 metres from shore in unprotected waters you need:
 - a GPS enabled EPIRB or PLB (must be worn).
 - flares or electronic visual distress signal device.
- Beyond 4 nautical miles from shore in unprotected waters a marine radio must also be carried.

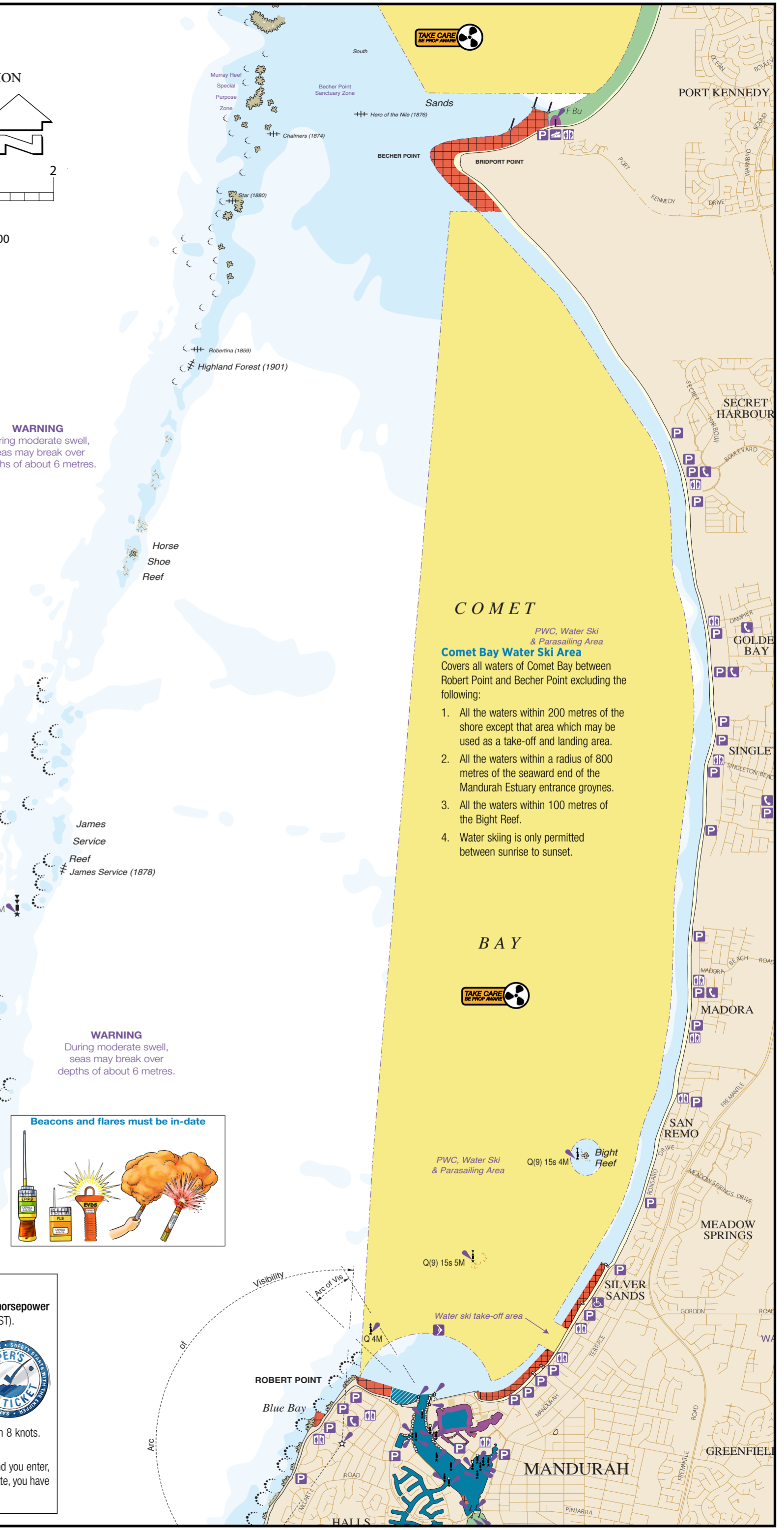
Personal water craft (PWC) may operate when towing a water skier. When towing a water skier all vessels are required to carry an observer of at least 14 years of age. Observers must also wear a lifejacket.

PWC not engaged in water skiing must at all times remain well clear of the take-off and landing area and any vessels engaged in water skiing. For further information visit our website or call 13 11 56.

Recreational Skipper's Ticket
The person in charge of a recreational vessel with a motor of 6 horsepower or less is not required to hold a Recreational Skippers Ticket (RST). A skipper in charge of a recreational vessel with a motor greater than 6 horsepower is required to hold an RST and carry it when boating.

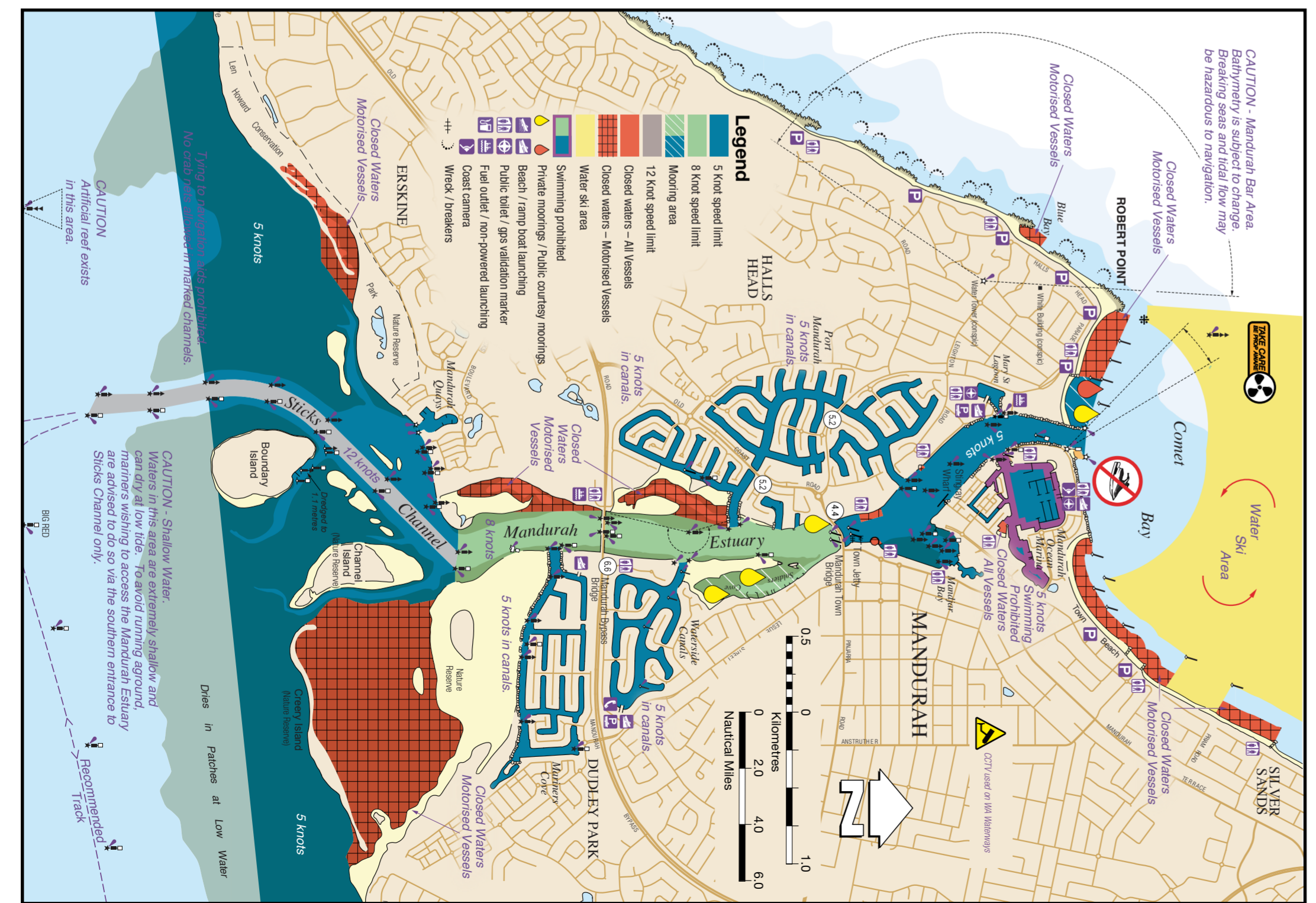
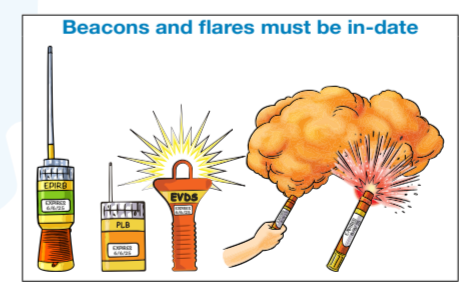
Age restrictions
A person under 10 years may not drive a motor boat. RST holders over 14 but under 16 years of age are restricted to operating during daylight hours at a speed less than 8 knots.

Interstate skipper's tickets
If you hold a valid/current interstate ticket, recognised by DoT and you enter, as a visitor or with the intention of permanently residing in the State, you have three months to have the qualification recognised.



COMET BAY
PWC, Water Ski & Parasailing Area
Comet Bay Water Ski Area
Covers all waters of Comet Bay between Robert Point and Becher Point excluding the following:

- All the waters within 200 metres of the shore except that area which may be used as a take-off and landing area.
- All the waters within a radius of 800 metres of the seaward end of the Mandurah Estuary entrance groyne.
- All the waters within 100 metres of the Bight Reef.
- Water skiing is only permitted between sunrise to sunset.



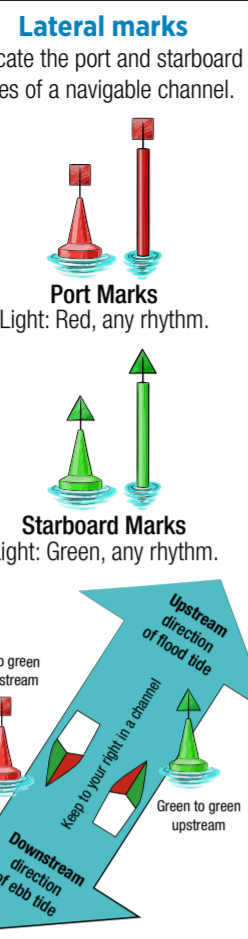
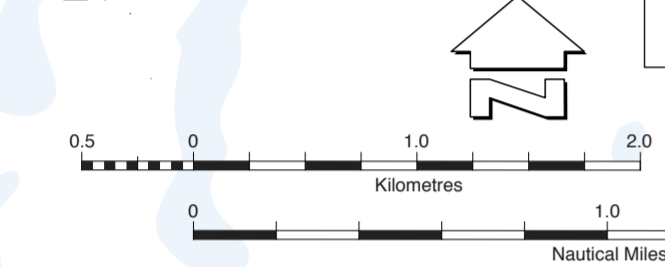
MANDURAH INLAND WATERS

NOT TO BE USED FOR NAVIGATION

For more detailed information, Refer to the Department of Transport's Nautical Charts Peel Inlet and Harvey Estuary WA 848 Bouvard WA 755 Cape Peron to Dawsville WA 913

Legend

- 5 Knot speed limit
- 8 Knot speed limit
- Mooring area
- 12 Knot speed limit
- Closed waters - All Vessels
- Closed waters - Motorised Vessels
- Closed waters - Personal Water Craft
- Water ski area
- Swimming prohibited
- Private moorings / Public courtesy moorings
- Beach / ramp boat launching
- Public toilet / gps validation marker
- Fuel outlet / non-powered launching
- Coast camera



WARNING
During moderate swell, seas may break over depths of about 6m.

INDIAN OCEAN

Freestyling Personal Water Craft (PWC)
Freestyle driving, wave jumping and surfing is prohibited in all speed restricted areas.

CAUTION - Rock Lobster Pits.
Rock Lobster fishing may take place in this area during the official season. Mariners are advised to keep well clear of lobster pot floats and submerged lines.

CAUTION Hazardous Entrance.
During large range tides, a current of 2 to 3 knots may be experienced in the Dawesville Channel. Moderate to heavy sea conditions may make navigation of the ocean entrance hazardous.

CAUTION Shallow Water.
Waters in this area are extremely shallow and can dry at low tide. To avoid running aground, mariners wishing to access the Mandurah Estuary are advised to do so via the southern entrance to Sticks Channel only.

CAUTION Artificial reef exists in this area.

CAUTION Siltation in marked channels may occur.
Weed build-up and floating or submerged debris in channels may be a navigation hazard. Beware of weed fouling engine cooling intake. Launching over or digging into river banks creates erosion and is prohibited.

CAUTION
Waters in the Peel and Harvey Estuary are shallow. For charted depths refer to Department of Transport's nautical charts.

CAUTION
There are numerous submerged rocks along the perimeter of Peel Inlet and Harvey Estuary.

CAUTION
Overhead powerlines exist at various locations over waterways on this guide.

CAUTION
Siltation in marked channels may occur. Weed build-up and floating or submerged debris in channels may be a navigation hazard. Beware of weed fouling engine cooling intake. Launching over or digging into river banks creates erosion and is prohibited.

CAUTION
There are numerous submerged rocks along the perimeter of Peel Inlet and Harvey Estuary.

CAUTION
There are numerous submerged rocks along the perimeter of Peel Inlet and Harvey Estuary.

CAUTION
There are numerous submerged rocks along the perimeter of Peel Inlet and Harvey Estuary.

CAUTION
There are numerous submerged rocks along the perimeter of Peel Inlet and Harvey Estuary.

CAUTION
There are numerous submerged rocks along the perimeter of Peel Inlet and Harvey Estuary.

CAUTION
There are numerous submerged rocks along the perimeter of Peel Inlet and Harvey Estuary.

CAUTION
There are numerous submerged rocks along the perimeter of Peel Inlet and Harvey Estuary.

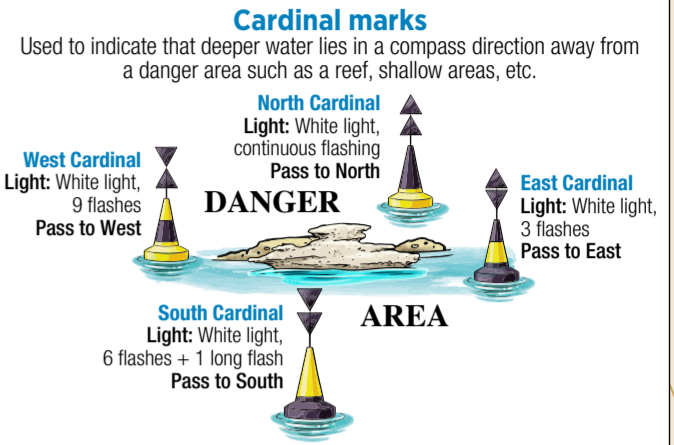
CAUTION
There are numerous submerged rocks along the perimeter of Peel Inlet and Harvey Estuary.

Remember to LOG ON, LOG OFF! every trip
with the local Marine Rescue group

Paddle craft, kiteboarding and windsurfing
When travelling beyond 400 metres from shore in unprotected waters you need:

- lifejackets (minimum 50S) must be worn;
- a GPS enabled EPIRB or PLB (must be worn).
- flares.

For further information visit our website or call 13 11 56.



Distress beacons (in-date)
EPIRB (AS/NZS 4280.1) or PLB (AS/NZS 4280.2)
Distress beacons must be in-date and registered with Australian Maritime Safety Authority (AMSA).
When operating more than 400 metres from shore in unprotected waters you must carry a GPS enabled EPIRB or PLB worn by a person on board.
For further information visit our website or call 13 11 56.

Public courtesy moorings
Courtesy moorings provided by DoT are for short term use (up to 72 hours) and vessels must not be left unattended for periods greater than four hours at a time.
They are a highly visible orange/red colour and display the maximum vessel length for use of the mooring. To use the mooring, approach the buoy from downwind and tie up using the floating rope.
Do not use the yellow moorings. It is an offence to use the yellow moorings if you do not have authorisation from the mooring owner.

Reduce wash
Vessel wash can cause damage to other vessels, retaining walls and erosion to the shore or property. Look behind you occasionally to make sure that your boat is not creating too much wash. If your wash is affecting other boats or property, slow down.

Ocean entrances
Siltation at the ocean entrances can cause dangerous conditions for boaters, if sand bars form. Don't risk crossing a bar unless you have local knowledge, experience and the right kind of boat. Wear a lifejacket while crossing a bar in any boat at any time.

GPS validation markers
Global positioning system (GPS) validation markers are unique visible marks placed at a number of public boat ramps and jetties where mariners and owners of portable GPS units can validate their position and map datum settings. The markers are small, flat and yellow, similar to 'cats eye' road lane markers. For more information visit www.transport.wa.gov.au/marine/gps-validation-markers.asp

Coast Cameras
Coast Cameras provide boaters and other aquatic users with near live images of the current weather and ocean conditions at selected locations along the coast. The images are updated every minute and displayed on our website: www.transport.wa.gov.au/coast-cams

Bridge clearance heights
Clearance heights shown on this sign are in metres above highest astronomical tide (HAT). Actual clearance will vary depending on the tide and/or flood level. The height of the tide throughout the day will vary depending on astronomical and meteorological conditions.

Bridge clearances	4.4m	6.6m	5.2m	17.6m	2.8m	3.1m	9.2m
Mandurah Bridge							
Mandurah Estuary Bridge							
Port Mandurah Bridge							
Port Bouvard Bridge							
Barragup Bridge							
Ravenswood Bridge							
Windich Bridge							

Speed conversion chart

Knots	KPH	MPH
1	1.85	1.15
5	9.25	5.75
8	14.80	9.20
12	22.20	13.80

Make a difference MAINTAIN AND WEAR YOUR LIFEJACKET



CAUTION - Mandurah Bar Area. Bathymetry is subject to change. Breaking seas and tidal flow may be hazardous to navigation.

CAUTION - Shallow Water. Waters in this area are extremely shallow and can dry at low tide. To avoid running aground, mariners wishing to access the Mandurah Estuary are advised to do so via the southern entrance to Sticks Channel only.

CAUTION - Siltation in marked channels may occur. Weed build-up and floating or submerged debris in channels may be a navigation hazard. Beware of weed fouling engine cooling intake. Launching over or digging into river banks creates erosion and is prohibited.

CAUTION - Hazardous Entrance. During large range tides, a current of 2 to 3 knots may be experienced in the Dawesville Channel. Moderate to heavy sea conditions may make navigation of the ocean entrance hazardous.

CAUTION - Artificial reef exists in this area.

CAUTION - Rock Lobster Pits. Rock Lobster fishing may take place in this area during the official season. Mariners are advised to keep well clear of lobster pot floats and submerged lines.

CAUTION - Shallow Water. Waters in this area are extremely shallow and can dry at low tide. To avoid running aground, mariners wishing to access the Mandurah Estuary are advised to do so via the southern entrance to Sticks Channel only.

CAUTION - Siltation in marked channels may occur. Weed build-up and floating or submerged debris in channels may be a navigation hazard. Beware of weed fouling engine cooling intake. Launching over or digging into river banks creates erosion and is prohibited.

CAUTION - Hazardous Entrance. During large range tides, a current of 2 to 3 knots may be experienced in the Dawesville Channel. Moderate to heavy sea conditions may make navigation of the ocean entrance hazardous.

CAUTION - Artificial reef exists in this area.

CAUTION - Rock Lobster Pits. Rock Lobster fishing may take place in this area during the official season. Mariners are advised to keep well clear of lobster pot floats and submerged lines.

CAUTION - Shallow Water. Waters in this area are extremely shallow and can dry at low tide. To avoid running aground, mariners wishing to access the Mandurah Estuary are advised to do so via the southern entrance to Sticks Channel only.

CAUTION - Siltation in marked channels may occur. Weed build-up and floating or submerged debris in channels may be a navigation hazard. Beware of weed fouling engine cooling intake. Launching over or digging into river banks creates erosion and is prohibited.

CAUTION - Hazardous Entrance. During large range tides, a current of 2 to 3 knots may be experienced in the Dawesville Channel. Moderate to heavy sea conditions may make navigation of the ocean entrance hazardous.

CAUTION - Artificial reef exists in this area.

CAUTION - Rock Lobster Pits. Rock Lobster fishing may take place in this area during the official season. Mariners are advised to keep well clear of lobster pot floats and submerged lines.

CAUTION - Shallow Water. Waters in this area are extremely shallow and can dry at low tide. To avoid running aground, mariners wishing to access the Mandurah Estuary are advised to do so via the southern entrance to Sticks Channel only.

CAUTION - Siltation in marked channels may occur. Weed build-up and floating or submerged debris in channels may be a navigation hazard. Beware of weed fouling engine cooling intake. Launching over or digging into river banks creates erosion and is prohibited.

CAUTION - Hazardous Entrance. During large range tides, a current of 2 to 3 knots may be experienced in the Dawesville Channel. Moderate to heavy sea conditions may make navigation of the ocean entrance hazardous.

CAUTION - Artificial reef exists in this area.

CAUTION - Rock Lobster Pits. Rock Lobster fishing may take place in this area during the official season. Mariners are advised to keep well clear of lobster pot floats and submerged lines.

CAUTION - Shallow Water. Waters in this area are extremely shallow and can dry at low tide. To avoid running aground, mariners wishing to access the Mandurah Estuary are advised to do so via the southern entrance to Sticks Channel only.

CAUTION - Siltation in marked channels may occur. Weed build-up and floating or submerged debris in channels may be a navigation hazard. Beware of weed fouling engine cooling intake. Launching over or digging into river banks creates erosion and is prohibited.

CAUTION - Hazardous Entrance. During large range tides, a current of 2 to 3 knots may be experienced in the Dawesville Channel. Moderate to heavy sea conditions may make navigation of the ocean entrance hazardous.

CAUTION - Artificial reef exists in this area.

CAUTION - Rock Lobster Pits. Rock Lobster fishing may take place in this area during the official season. Mariners are advised to keep well clear of lobster pot floats and submerged lines.

CAUTION - Shallow Water. Waters in this area are extremely shallow and can dry at low tide. To avoid running aground, mariners wishing to access the Mandurah Estuary are advised to do so via the southern entrance to Sticks Channel only.

CAUTION - Siltation in marked channels may occur. Weed build-up and floating or submerged debris in channels may be a navigation hazard. Beware of weed fouling engine cooling intake. Launching over or digging into river banks creates erosion and is prohibited.

CAUTION - Hazardous Entrance. During large range tides, a current of 2 to 3 knots may be experienced in the Dawesville Channel. Moderate to heavy sea conditions may make navigation of the ocean entrance hazardous.

CAUTION - Artificial reef exists in this area.

CAUTION - Rock Lobster Pits. Rock Lobster fishing may take place in this area during the official season. Mariners are advised to keep well clear of lobster pot floats and submerged lines.

CAUTION - Shallow Water. Waters in this area are extremely shallow and can dry at low tide. To avoid running aground, mariners wishing to access the Mandurah Estuary are advised to do so via the southern entrance to Sticks Channel only.

CAUTION - Siltation in marked channels may occur. Weed build-up and floating or submerged debris in channels may be a navigation hazard. Beware of weed fouling engine cooling intake. Launching over or digging into river banks creates erosion and is prohibited.

CAUTION - Hazardous Entrance. During large range tides, a current of 2 to 3 knots may be experienced in the Dawesville Channel. Moderate to heavy sea conditions may make navigation of the ocean entrance hazardous.

CAUTION - Artificial reef exists in this area.

CAUTION - Rock Lobster Pits. Rock Lobster fishing may take place in this area during the official season. Mariners are advised to keep well clear of lobster pot floats and submerged lines.

CAUTION - Shallow Water. Waters in this area are extremely shallow and can dry at low tide. To avoid running aground, mariners wishing to access the Mandurah Estuary are advised to do so via the southern entrance to Sticks Channel only.

CAUTION - Siltation in marked channels may occur. Weed build-up and floating or submerged debris in channels may be a navigation hazard. Beware of weed fouling engine cooling intake. Launching over or digging into river banks creates erosion and is prohibited.

CAUTION - Hazardous Entrance. During large range tides, a current of 2 to 3 knots may be experienced in the Dawesville Channel. Moderate to heavy sea conditions may make navigation of the ocean entrance hazardous.

CAUTION - Artificial reef exists in this area.

CAUTION - Rock Lobster Pits. Rock Lobster fishing may take place in this area during the official season. Mariners are advised to keep well clear of lobster pot floats and submerged lines.

CAUTION - Shallow Water. Waters in this area are extremely shallow and can dry at low tide. To avoid running aground, mariners wishing to access the Mandurah Estuary are advised to do so via the southern entrance to Sticks Channel only.

CAUTION - Siltation in marked channels may occur. Weed build-up and floating or submerged debris in channels may be a navigation hazard. Beware of weed fouling engine cooling intake. Launching over or digging into river banks creates erosion and is prohibited.

CAUTION - Hazardous Entrance. During large range tides, a current of 2 to 3 knots may be experienced in the Dawesville Channel. Moderate to heavy sea conditions may make navigation of the ocean entrance hazardous.

CAUTION - Artificial reef exists in this area.

CAUTION - Rock Lobster Pits. Rock Lobster fishing may take place in this area during the official season. Mariners are advised to keep well clear of lobster pot floats and submerged lines.

CAUTION - Shallow Water. Waters in this area are extremely shallow and can dry at low tide. To avoid running aground, mariners wishing to access the Mandurah Estuary are advised to do so via the southern entrance to Sticks Channel only.

CAUTION - Siltation in marked channels may occur. Weed build-up and floating or submerged debris in channels may be a navigation hazard. Beware of weed fouling engine cooling intake. Launching over or digging into river banks creates erosion and is prohibited.

CAUTION - Hazardous Entrance. During large range tides, a current of 2 to 3 knots may be experienced in the Dawesville Channel. Moderate to heavy sea conditions may make navigation of the ocean entrance hazardous.