

Boating Guide Mandurah Marine Safety



Required Safety Equipment

Equipment	Protected Waters	0-2 Nautical Miles from the mainland shore	2-5 Nautical Miles from the mainland shore	Over 5 Nautical Miles from the mainland shore
Recreational Skipper's Ticket The skipper of a recreational vessel, powered by a motor greater than 6 horsepower must hold an RST.	✓	✓	✓	✓
Bilge Pump/Bailer All vessels must carry a bilge pump. Vessels under 7 metres may carry a bailer in lieu of a bilge pump.	✓	✓	✓	✓
Fire Extinguisher Vessels with an inboard engine or carrying hydrocarbon heating or cooling appliances must carry an approved fire extinguisher.	✓	✓	✓	✓
Anchor and Line An efficient anchor and line must be carried.	—	✓	✓	✓
Lifejacket A lifejacket bearing the label Level 100 (or higher) with the Australian Standard AS 1512, AS 4758 or ISO 12402 must be carried for every person onboard.	—	✓	✓	✓
Red and Orange Flares (in-date) At least two hand held red flares and two hand held orange flares must be carried. Two parachute flares may be carried in lieu of the two hand held red flares and a smoke canister may be carried in lieu of the smoke flares.	—	✓	✓	✓
EPIRB (in-date) A 406 MHz EPIRB registered with AMSA bearing the standard AS/NZS 4280.1 must be carried if proceeding more than 2 nautical miles from the mainland shore or more than 400 metres from an island located more than 2 nautical miles from the mainland shore.	—	—	✓	✓
Parachute Flares (in-date) A minimum of two parachute flares must be carried if operating more than 5 nautical miles from the mainland shore or more than 1 nautical mile from an island located more than 5 nautical miles from the mainland shore.	—	—	—	✓
Marine Radio A marine radio must be carried if operating more than 5 nautical miles from the mainland shore or more than 1 nautical mile from an island located more than 5 nautical miles from the mainland shore. The radio can be 27 MHz, VHF or HF.	—	—	—	✓

Contact details

Department of Transport
 Email: marine.safety@transport.wa.gov.au
 Website: www.transport.wa.gov.au/marine
 Marine Safety Hotline: 13 11 56

Boating Weather Forecast
 Boating Weather: 1300 659 210
 Website: www.bom.gov.au/marine

Police
 Water Police: 9442 8600
 Emergency: 000
 Mandurah: 9581 0222

Marine Rescue WA
 Emergency contact: VHF 16 and 27Mhz 88
 Mandurah: VMR611

Department of Primary Industry and Regional Development
 Website: www.fish.wa.gov.au

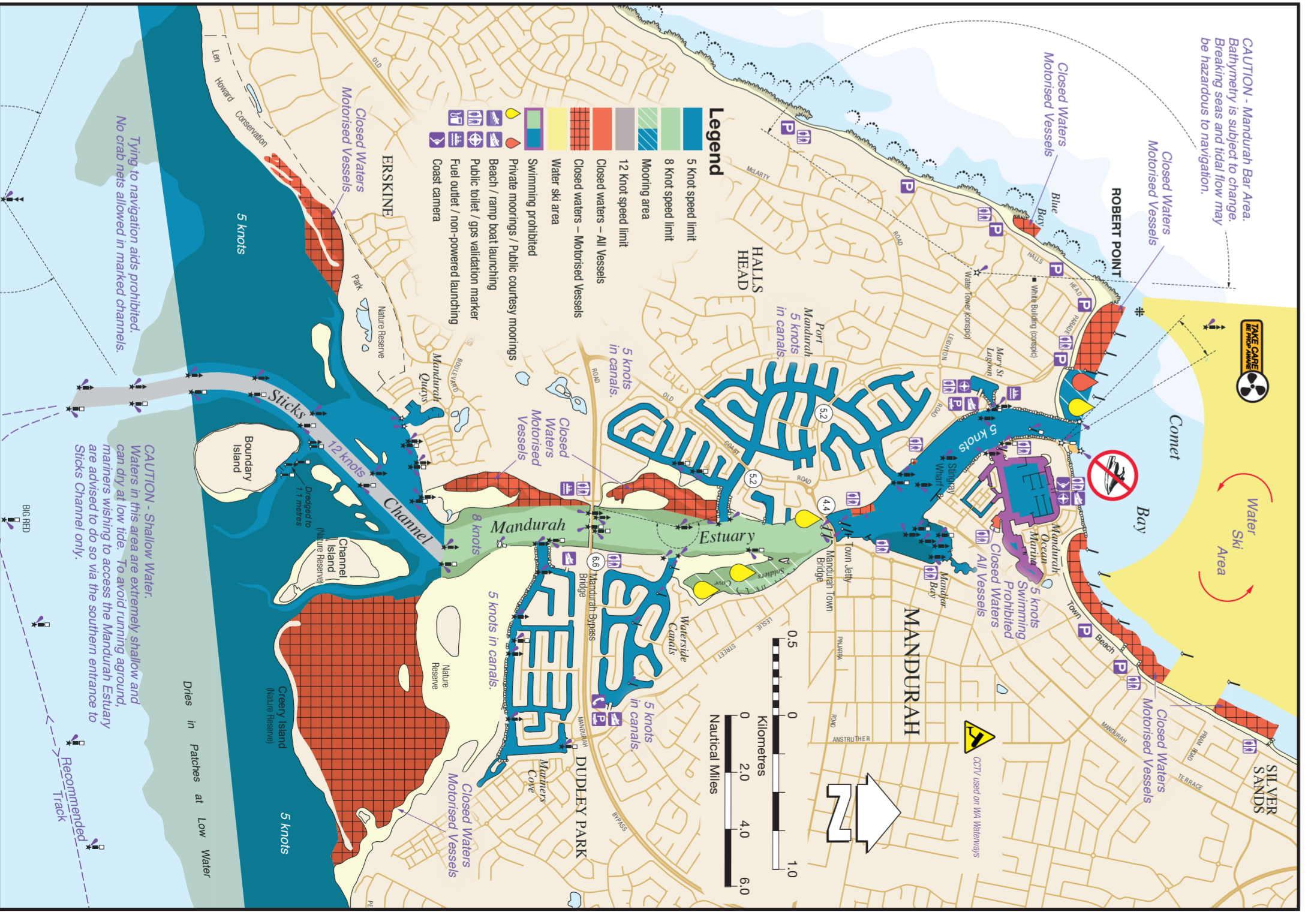
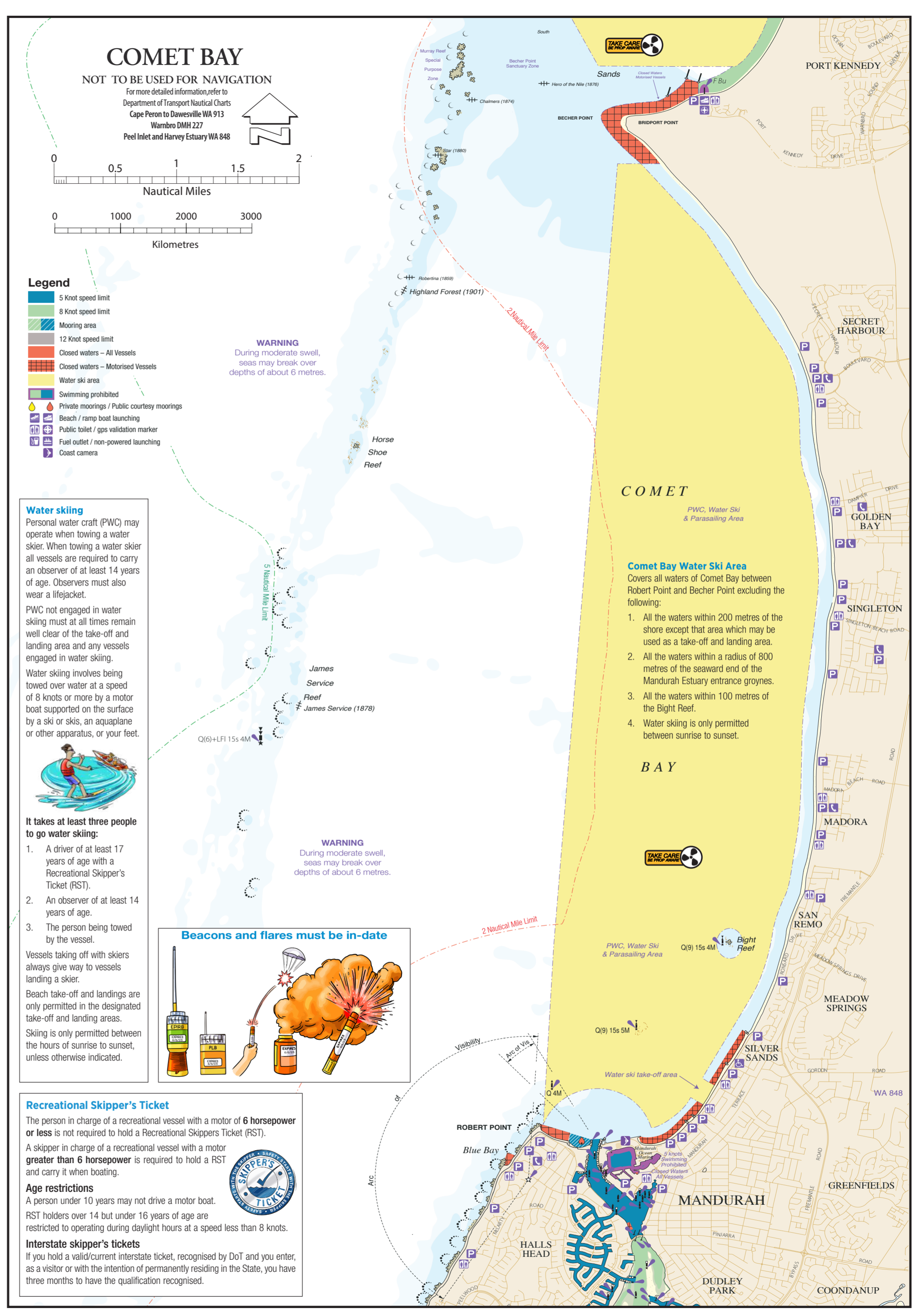
Department of Biodiversity, Conservation and Attractions
 Website: www.dpaw.wa.gov.au

For further information go to www.transport.wa.gov.au/boatingguides or scan the QR Code

The information contained in this publication is provided in good faith and believed to be accurate at time of publication. The State shall in no way be liable for any loss sustained or incurred by anyone relying on the information.



May 2020 - R1



MANDURAH INLAND WATERS

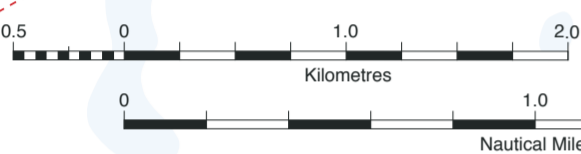
NOT TO BE USED FOR NAVIGATION

For more detailed information, refer to the Department of Transport's Nautical Charts Peel Inlet and Harvey Estuary WA 846 Bourard WA 755 Cape Peron to Dawsville WA 913



Legend

- 5 Knot speed limit
- 8 Knot speed limit
- 12 Knot speed limit
- Mooring area
- Closed waters - All Vessels
- Closed waters - Motorised Vessels
- Closed waters - Personal Water Craft
- Water ski area
- Swimming prohibited
- Private moorings / Public courtesy moorings
- Beach / ramp boat launching
- Public toilet / gps validation marker
- Fuel outlet / non-powered launching
- Coast camera



Lateral Marks
Indicate the port and starboard sides of a navigable channel.

Port Marks
Light: Red, any rhythm.

Starboard Marks
Light: Green, any rhythm.

Stay on the starboard side of the channel.

INDIAN OCEAN

WARNING
During moderate swell, seas may break over depths of about 6m.

Freestyling Personal Water Craft (PWC)

Freestyle driving, wave jumping and surfing is prohibited in all speed restricted areas.



CAUTION - Rock Lobster Pots.
Rock Lobster fishing may take place in this area during the official season. Mariners are advised to keep well clear of lobster pot floats and submerged lines.

CAUTION Hazardous Entrance.
During large range tides, a current of 2 to 3 knots may be experienced in the Dawesville Channel. Moderate to heavy sea conditions may make navigation of the ocean entrance hazardous.

CAUTION
Hazardous Entrance. During large range tides, a current of 2 to 3 knots may be experienced in the Dawesville Channel. Moderate to heavy sea conditions may make navigation of the ocean entrance hazardous.

CAUTION
Hazardous Entrance. During large range tides, a current of 2 to 3 knots may be experienced in the Dawesville Channel. Moderate to heavy sea conditions may make navigation of the ocean entrance hazardous.

CAUTION
Hazardous Entrance. During large range tides, a current of 2 to 3 knots may be experienced in the Dawesville Channel. Moderate to heavy sea conditions may make navigation of the ocean entrance hazardous.

CAUTION
Hazardous Entrance. During large range tides, a current of 2 to 3 knots may be experienced in the Dawesville Channel. Moderate to heavy sea conditions may make navigation of the ocean entrance hazardous.

CAUTION
Hazardous Entrance. During large range tides, a current of 2 to 3 knots may be experienced in the Dawesville Channel. Moderate to heavy sea conditions may make navigation of the ocean entrance hazardous.

CAUTION
Hazardous Entrance. During large range tides, a current of 2 to 3 knots may be experienced in the Dawesville Channel. Moderate to heavy sea conditions may make navigation of the ocean entrance hazardous.

CAUTION
Hazardous Entrance. During large range tides, a current of 2 to 3 knots may be experienced in the Dawesville Channel. Moderate to heavy sea conditions may make navigation of the ocean entrance hazardous.

CAUTION
Hazardous Entrance. During large range tides, a current of 2 to 3 knots may be experienced in the Dawesville Channel. Moderate to heavy sea conditions may make navigation of the ocean entrance hazardous.

CAUTION
Hazardous Entrance. During large range tides, a current of 2 to 3 knots may be experienced in the Dawesville Channel. Moderate to heavy sea conditions may make navigation of the ocean entrance hazardous.

CAUTION - Mandurah Bar Area.
Bathymetry is subject to change. Breaking seas and tidal flow may be hazardous to navigation.

CAUTION - Shallow Water.
Waters in this area are extremely shallow and can dry at low tide. To avoid running aground, mariners wishing to access the Mandurah Estuary are advised to do so via the southern entrance to Slicks Channel only.

CAUTION - Shallow Water.
Waters in this area are extremely shallow and can dry at low tide. To avoid running aground, mariners wishing to access the Mandurah Estuary are advised to do so via the southern entrance to Slicks Channel only.

CAUTION - Shallow Water.
Waters in this area are extremely shallow and can dry at low tide. To avoid running aground, mariners wishing to access the Mandurah Estuary are advised to do so via the southern entrance to Slicks Channel only.

CAUTION - Shallow Water.
Waters in this area are extremely shallow and can dry at low tide. To avoid running aground, mariners wishing to access the Mandurah Estuary are advised to do so via the southern entrance to Slicks Channel only.

CAUTION - Shallow Water.
Waters in this area are extremely shallow and can dry at low tide. To avoid running aground, mariners wishing to access the Mandurah Estuary are advised to do so via the southern entrance to Slicks Channel only.

CAUTION - Shallow Water.
Waters in this area are extremely shallow and can dry at low tide. To avoid running aground, mariners wishing to access the Mandurah Estuary are advised to do so via the southern entrance to Slicks Channel only.

CAUTION - Shallow Water.
Waters in this area are extremely shallow and can dry at low tide. To avoid running aground, mariners wishing to access the Mandurah Estuary are advised to do so via the southern entrance to Slicks Channel only.

CAUTION - Shallow Water.
Waters in this area are extremely shallow and can dry at low tide. To avoid running aground, mariners wishing to access the Mandurah Estuary are advised to do so via the southern entrance to Slicks Channel only.

CAUTION - Shallow Water.
Waters in this area are extremely shallow and can dry at low tide. To avoid running aground, mariners wishing to access the Mandurah Estuary are advised to do so via the southern entrance to Slicks Channel only.

CAUTION - Shallow Water.
Waters in this area are extremely shallow and can dry at low tide. To avoid running aground, mariners wishing to access the Mandurah Estuary are advised to do so via the southern entrance to Slicks Channel only.

CAUTION - Shallow Water.
Waters in this area are extremely shallow and can dry at low tide. To avoid running aground, mariners wishing to access the Mandurah Estuary are advised to do so via the southern entrance to Slicks Channel only.

CAUTION - Shallow Water.
Waters in this area are extremely shallow and can dry at low tide. To avoid running aground, mariners wishing to access the Mandurah Estuary are advised to do so via the southern entrance to Slicks Channel only.

CAUTION - Shallow Water.
Waters in this area are extremely shallow and can dry at low tide. To avoid running aground, mariners wishing to access the Mandurah Estuary are advised to do so via the southern entrance to Slicks Channel only.

CAUTION - Shallow Water.
Waters in this area are extremely shallow and can dry at low tide. To avoid running aground, mariners wishing to access the Mandurah Estuary are advised to do so via the southern entrance to Slicks Channel only.

Public courtesy moorings

Courtesy moorings provided by DoT are for short term use (up to 72 hours) and vessels must not be left unattended for periods greater than four hours at a time.

They are a highly visible orange/red colour and display the maximum vessel length for use of the mooring. To use the mooring, approach the buoy from downwind and tie up using the floating rope.

Do not use the yellow moorings. It is an offence to use the yellow moorings if you do not have authorisation from the mooring owner.

Cardinal Marks

Used to indicate that deeper water lies in a compass direction away from a danger area such as a reef, shallow areas, etc.

North Cardinal
Light: White light, continuous flashing
Pass to North

West Cardinal
Light: White light, 9 flashes
Pass to West

South Cardinal
Light: White light, 6 flashes + 1 long flash
Pass to South

East Cardinal
Light: White light, 3 flashes
Pass to East

Water Ski Area

Speed conversion chart

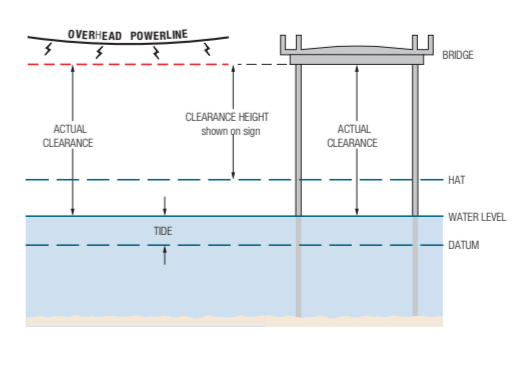
Knots	KPH	MPH
1	1.85	1.15
5	9.25	5.75
8	14.80	9.20
12	22.20	13.80

CAUTION
Overhead powerlines exist at various locations over waterways on this guide.

Bridge and powerline clearances

Clearance heights shown on this sign are in metres above highest astronomical tide (HAT). Actual clearance will vary depending on the tide and/or flood level. The height of the tide throughout the day will vary depending on astronomical and meteorological conditions.

Bridge	Clearance
Mandurah Bridge	4.4m
Mandurah Estuary Bridge	6.6m
Port Mandurah Bridge	5.2m
Port Bourard Bridge	17.6m
Barragup Bridge	2.8m
Ravenswood Bridge	3.1m
Windich Bridge	9.2m
Barragup Powerline	5.8m
Mandurah Bridge Powerline	5.4m
Ravenswood Powerline	2.8m



Personal water craft (PWC)

The use of PWC is prohibited upstream of the Barragup Traffic Bridge in the Serpentine River and upstream of the Ravenswood Traffic Bridge in the Murray River.

To operate a PWC you must be at least 16 years of age and hold an RST. Every person on board a PWC must wear a lifejacket at all times and at times carry safety equipment:

- Within 400 metres of the shore – either level 150, 100 or 50/50s
- Between 400 metres and 2 nautical miles from shore – level 100 or 150 only and carry an in-date inshore distress flare kit
- Between 2 and 5 nautical miles – level 100 or 150 only and carry an in-date inshore distress flare kit and EPIRB.

Freestyling and wake jumping is prohibited:

- within any speed restricted area;
- within 30 metres of another PWC;
- within 50 metres of another vessel or person in the water.

Vessels less than 3.75 metres

A person in charge of a vessel less than 3.75 metres in length is not allowed to travel greater than five nautical miles from the mainland shore.

Kiteboarding and windsurfing

In certain conditions these small, fast moving sailing vessels may be difficult to see and skippers need to maintain a proper lookout at all times and take appropriate action to avoid collisions.

All windsurfers and kiteboarders have a duty of care to ensure their activities are conducted with regard to the prevailing conditions and circumstances and take appropriate action to avoid collisions.

Kiteboarders and windsurfers operating more than 400 metres from shore are required to carry safety equipment. To get a sticker about the rules visit www.transport.wa.gov.au/kitesafe or call 13 11 56.

Paddle craft

Recreational canoes, kayaks, surf skis, wave skis, inflatables or similar paddle craft that are propelled by a person using a paddle must comply with WA marine laws. To get a brochure and sticker about the rules call 13 11 56 or visit www.transport.wa.gov.au/marine/paddlesafe

Reduce wash

Vessel wash can cause damage to other vessels, retaining walls and erosion to the shore or property. Look behind you occasionally to make sure that your boat is not creating too much wash. If your wash is affecting other boats or property, slow down.

Ocean entrances

Siltation at the ocean entrances can cause dangerous conditions for boaters, if sand bars form. Don't risk crossing a bar unless you have local knowledge, experience and the right kind of boat. Wear a lifejacket while crossing a bar in any boat at any time.

GPS validation markers

Global positioning system (GPS) validation markers are unique visible marks placed at a number of public boat ramps and jetties where mariners and owners of portable GPS units can validate their position and map datum settings. The markers are small, flat and yellow, similar to 'cats eye' road lane markers. For more information visit www.transport.wa.gov.au/marine/gps-validation-markers.asp

Coast Cameras

Coast Cameras provide boaters and other aquatic users with near live images of the current weather and ocean conditions at selected locations along the coast. The images are updated every minute and displayed on our website: www.transport.wa.gov.au/coast-cams