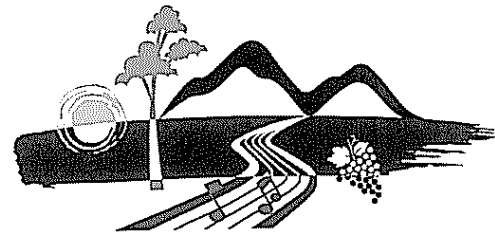
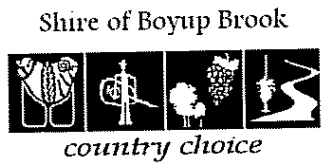
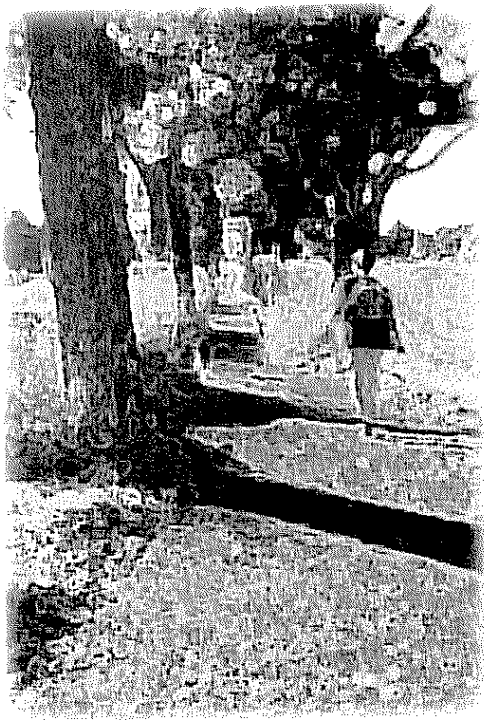


The Shires of Boyup Brook, Bridgetown-Greenbushes, Donnybrook-Balingup and Nannup are located in the picturesque Blackwood River Valley region. Each Shire boasts a natural environment of unparalleled beauty. Walk trails in the Blackwood River Valley traverse undulating hills and valleys, stunning forests of jarrah and marri trees with native wildlife and tranquil waterways. All this in one of the prettiest areas of the South West. The changing seasons add a colourful dimension with many deciduous trees and exquisite spring flower displays.

As well as an abundance of natural beauty, the Blackwood River Valley region hosts an array of festivals, fine food, gourmet produce, wineries and cideries. A walking trek through the Blackwood River valley can reveal some stunning natural wonders and a whole lot more!

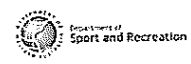
Maps and Information for all Blackwood River Valley Trails can be found at the Visitor Centres in each town - Bridgetown, Balingup, Boyup Brook and Nannup.



**BLACKWOOD RIVER VALLEY**



**Discover walking trails  
in the beautiful  
Blackwood River Valley**



# Blackwood River Valley Walk Trails

## **GREENBUSHES**

These walks begin and end at the Heritage Park on Blackwood Road (opposite the Greenbushes Discovery Centre). Maps can be obtained from the Greenbushes Roadhouse, Discovery Centre, and Telecentre or downloaded from [www.greenbushesinc.asn.au](http://www.greenbushesinc.asn.au).

### ***New Zealand Gully Walk Trail***

Length – 7km (3 hours return)

This walk trail winds around a series of man made lakes - remnants of historic mining in the town.

### ***Mining Heritage Walk Trail***

Length – 3 km (1 hour)

This short walk through the jarrah forest surrounding the Greenbushes townsite takes in old mining shafts, an historic mine tunnel, heritage buildings including the Old Courthouse, Gaol, Police Station and the current open cut mine lookout.

## **BRIDGETOWN**

### ***Blackwood River Trail***

Length 7km total but can be done in three sub-sections from central point (2 hours). The trail is broken into three distinct sections of 4km, 1km & 2km, being respectively, the Old Rectory Walk, the River Park Walk and the Greys Hill Walk. The trail traverses both sides of the Blackwood River in part and includes a new footbridge crossing the river. The midpoint of the trail brings users to Blackwood River Park where public toilet facilities, car parking, BBQ and bench seating facilities are available for use.

## **BALINGUP**

Maps can be obtained from Balingup Tourist Bureau, General Store or downloaded from [www.balingup.asn.au](http://www.balingup.asn.au).

### ***Golden Valley Tree Park Track***

Length – 2.1 km each way (60 mins return)

This flat, easy walking track leads to Golden Valley Tree Park, home to hundreds of trees from Australia and also features trees species from around the world.

The track leads to a range of walking circuits within the Tree Park, all of which emanate from the car parks in the Australian and Overseas collections (signposted). Allow 3 hours if you intend walking them all! There is a wood fire BBQ available in the park.

### ***Grimwade Road Circuit***

Length 12km (3 hours)

The first section of this track follows the Bibbulmun Track north, through jarrah forest and pine plantations. The second section, along Grimwade Road takes you along a sealed road, through rolling hills and farmland, back to Balingup. Some sections are steep and very challenging.

### ***Racecourse Flora Reserve***

Length up to 2km (1.5 hrs)

Comprises four separate signposted walks on mainly flat, sandy ground. Some steep slopes on one walk. This trail, once a Racecourse, is now an area of gently undulating native bush land. Visitors appreciate the wild flowers (in season), native trees, bird and animal life. The reserve has a picnic area and information bay.

## **BOYUP BROOK**

### ***Billabong Reserve Walk***

Length – 3.2 km (1.5 hrs)

This multi-use (horse/walk/cycle) trail begins on the outskirts of town near the 'Boyup Brook Billabong Reserve'. The initial walk skirts Boyup Brook as it wends its way towards the Blackwood River. From there, the trail follows the historical disused railway line to the impressive 'Skeleton Bridge'. This magnificent wooden structure spans the Blackwood River. With an 80 metre span, and a 12 metre drop from its centre point this pre World War II structure is a must see. This is an extremely horse and cycle friendly track through picturesque valleys.

### ***Town Trail***

Length – 6 km (1.5 hours)

The town trail circuits the township site of Boyup Brook and is accessible from several points within the township. The trail is popular with locals and visitors alike.

The Railway Reserve is a kaleidoscope of colour during the wildflower season and the walk takes you through our Lions Club Park as well as along the banks of the Blackwood River.

## **NANNUP**

### ***Nannup Riverside Walk***

Length – 2.5 km (1 hour)

This walk follows the Blackwood River Foreshore before looping back, following several minor roads for another 2km bringing you back to the Visitors Centre in the middle of Nannup where you can access parking bays, visitor information and other public facilities. On the track you will find raised timber deck and view points, picnic benches as well as interpretive signage along the way.

### ***Kondil Park Walk***

Length – 3.2 km (1.5 hours)

This walk incorporates the Casurina (700m) and Sheoak (2.5km) Trails which form an elongated figure of 8 circuit. This trail is well marked and meanders through native bush land with spectacular wildflower displays, native trees and bird and animal life.

### ***Old Timberline Trail***

Length – 20 km (7 hours)

This trail follows a disused railway line. Access to the trail from Barrabup Pool and Worker's Pool provides opportunity for shorter walks. The trail crosses a number of small timber bridges and there is access to public toilets, wood BBQ's, tent sites and information bays. Highlights of this trail include the deck view platforms onto the waterways and beautiful forest scenery. There is a DEC built cabin with bunk beds and toilet facilities at the campsite between Barrabup Pool and Cambray Siding - a spectacular spot with views of the river that are only accessible via the trail.

